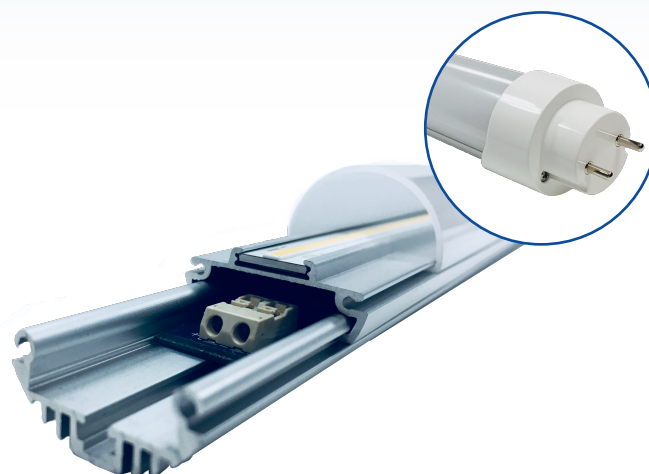


# X-Lux LED Tube Lights

## PRODUCT DESCRIPTION

Matrix Railway LED Tube Light series is designed for the rail industry, featuring a T10 Lens and aluminum constructed tube with T8 end caps, which provide maximum light distribution not achievable with a T8 Lens. This series is perfect for retrofit and other versatile applications. The LED Board is designed to provide wide range of lumen output, 500 to 1000 lumen/ft. The LED Lights emit clean bright white light diffused through white polycarbonate lens. Internal LED driver operates without ballast, providing regulation and protection of the LED lights, guaranteeing the long operating life.



### Tube Light Description



### Dimensional Options

Model	P/N	Description	Size Dim A	Watts	Lum n F	Input V #	Input Current
520	A 29841	Light, Tube, 2-Pin, T8-End Cap, T10-Lens		15	1000	37.5	0.5

### Electrical Stats & Operating Functions

#### EMC/EMI/ELECTRICAL TESTS

Fast Transient Burst-power Ports	IEC 6100-4-4
Surges – Power Ports	IEC 6100-4-5
Power Port And Enclosure – Emissions Tests	CISPR1 GROUP1 CLASS A
Conducted Radio Freq –signal Ports Immunity	IEC8100-4-6
Radio Frequencies - Enclosure	IEC6100-4-3
Electrostatic Discharge	IEC6100-4-2
Fast Transient Burst – Signals Ports	IEC6100-4-4 2Kv
Power Port And Enclosure – Emissions Tests	CISPR 11 GROUP1 CLASS A
Reverse Voltage Protection	

#### Environmental Tests

Storage Temperature	-30C to 85 C
Vibration, Shock And Bump Test	IEC61373
FLAMMABILITY SMOKE EMISSIONS AND TOXICITY	ASTM E162, ASTM 662 and BSS7239
Cooling Test	IEC60068-2-1
Dry Heat Test	IEC60068-2

### General Specifications

Parameter	Specification
Input Voltage Range	21 - 48 VDC
Power Consumption	15 W
Viewing Angle	120° Deg

Parameter	Symbol	Ratings	Unit
Colour Temp	CCT	4000	k
CRI		80	Ra
Total Luminous		4,350	Lm
Luminous Efficacy		102	Lm/W
Operating Temperature	Toper	-20 C to 70 C	°C
Storage Temperature	Tstg	-30 C to 85 C	°C
Life Time		60,000	(Hrs)